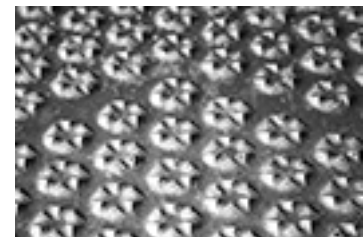


Your KRAIBURG dealer:



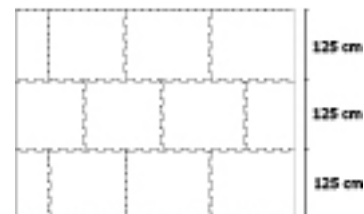
optiGrip-surface



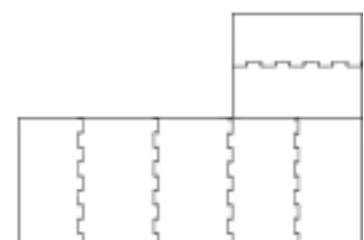
stud profile for ideal softness



KRAIBURG fastening system: extremely sturdy, rounded off and flush with the mat



profiKURA Flex covering example 3-sides / 4-sides puzzle



profiKURA Form covering example (for technical reasons the adjoining areas

animal-friendly softness, improved grip and even claw abrasion on all walking areas in the cattle house

- optiGrip-surface with incorporated abrasive corundum and star-shaped profiling
 - » high slip resistance
 - » contributes to correct claw form through even abrasion on all walking areas in the cattle house
- improved walking and standing comfort
 - » supports claw health and mobility
 - » promotes feed intake and high yield
- helps to reduce noise and stress
- faster milking through improved parlour entrance and exit and relaxed cows
- can be installed between milking times*
- suitable for new construction as well as for renovation

Abrasive corundum:

- the **second hardest mineral** after diamonds
- does not react with acids and bases: best precondition for use in slurry environments
- patented technology which has been well-proven in the KRAIBURG-group for many years

Installation:

The **full benefits** from using this product (slip resistance + optimal claw abrasion) are realised with **full coverage in all walking areas** in the cattle house

> balanced content of abrasive agent in the surface

profiKURA Flex - the flexible one

- available with puzzle shaped edges on 2, 3 or 4 sides
- through the versatile dimensions and combination possibilities, the most unusually shaped areas can be covered; the mats might only have to be cut to shape on the edges of the surface

Dimensions:

thickness: 24 mm

2 sides with puzzle shaped edges - length x width: 125 cm x

87.5/92/96/100/104.5/109/113/117/121.5/126/

130/134/138.5/143/147/151/155.5/160/164 cm (puzzle seam on wide sides)

3 sides with puzzle shaped edges - length x width: 125 cm x

82/99/116/133/150/167 cm (puzzle seam on wide sides and on one long side)

Gummiwerk KRAIBURG Elastik GmbH & Co. KG

Göllstraße 8 • 84529 Tittmoning • Deutschland • Tel.: +49 8683 701-303 • Fax: +49 8683 701-190 • E-Mail: info@kraiburg-elastik.de • www.kraiburg-elastik.de

4 sides with puzzle shaped edges - length x width: 125 cm x 170 cm

do not have puzzle-shaped sides as standard)

profiKURA Form - the tailor-made one

- dimensionally accurate projected solutions for surfaces with one or more adjoining rectangular areas
- exactly fitting mats with an easily understandable installation plan: easy installation - practically no cutting work - no cut-off

profiKURA Rotary - in the rotary parlour carousel

- tailor-made
- can be installed piece by piece between milking times

profiKURA Flush - for flushing manure removal

- with straight edges and U-shaped fastening

Dimensions:

thickness: 24 mm

length x width: 125 cm x 170 cm

profiKURA SUN - for direct solar radiation

- expansion slits in the mat balance out larger thermal expansion
- available as: **profiKURA P SUN** » / profiKURA Flex SUN / profiKURA Form SUN / profiKURA Flush SUN

profiKURA CowWalk - for travel lanes

- cows prefer the soft, claw-friendly "KURA-tracks" and walk more confidently

Dimensions:

profiKURA CowWalk:

thickness: 24 mm

width x length: 61 x 70 cm (2 sides with puzzle shaped edges)

profiKURA CowWalk E: grooves on lower side

thickness: 19 mm

width x length: 61 x 170 cm (2 sides with puzzle shaped edges)

Advice on claw trimming:

profiKURA maintains the claw form, but claw trimming is still necessary!

Claws must still be trimmed regularly, but only for the purpose of claw care and less for position correction or complex treatment. We recommend **functional claw trimming 4 to 6 weeks before profiKURA is installed.**

Important: do not install profiKURA at the same time you trim claws, because the claw has to become accustomed to the abrasion.

Installation:

easy and fast installation with KRAIBURG fastening system (part of delivery)*

* Please take notice of the corresponding KRAIBURG specifications and installation instructions with useful advice and tips.

>The products presented here should only be used for the mentioned applications. Technical specifications are subject to alterations. All sales are subject to our General Terms and Conditions. Legal basis is the German version of the document.

Tolerances:**thickness:**

+3/-2 mm

The tolerances also apply within the mat and when installed.

length + width:

+/- 1.5 % (DIN ISO 3302-1 tolerance class M4)