

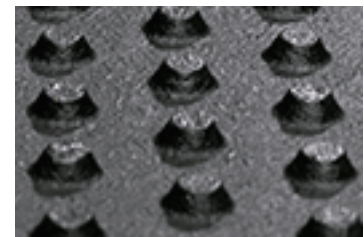
KURA S



Your KRAIBURG dealer:



grip-surface: supports sure footing



stud profile for ideal softness



fastening element: patented rubber peg to prevent lateral slipping - flush with the mat

The benchmark for excellent walking comfort since more than 10 years

- **tailor-made for every slatted floor geometry**
the mats are generally dimensioned according to the guidelines established by our specialists. The slatted floor must be suited for covering with KRAIBURG mats*
- dimensional stability and long durability through large-scale mats extending over several slatted floor elements
- enhances animal health, productivity and longevity
- improves slip resistance
- for new construction, as well as renovating slippery or claw-damaging walking alleys
- easy-to-handle single mats for simple installation
- extremely sturdy fastening system
- compatible with use of manure scraper, robot scraper and wheeled traffic*

Dimensions:

thickness: 24 mm

width and length: tailor-made

Important prerequisites for slatted floors:

slit width: starting at 24 mm

slat width within concrete elements: starting at 80 mm

Accessory:

pediKURA® » - soft flooring with abrasion zones

Installation:

easy and fast installation with corresponding, patented rubber pegs*

* Please take notice of the corresponding KRAIBURG specifications and installation instructions with useful advice and tips.

>The products presented here should only be used for the mentioned applications. Technical specifications are subject to alterations. All sales are subject to our General Terms and Conditions. Legal basis is the German version of the document.

Tolerances:

thickness:
+3/-2 mm

length + width:
+/- 1.5 % (DIN ISO 3302-1 tolerance class M4)

Gummiwerk KRAIBURG Elastik GmbH & Co. KG

Göllstraße 8 • 84529 Tittmoning • Deutschland • Tel.: +49 8683 701-303 • Fax: +49 8683 701-190 • E-Mail: info@kraiburg-elastik.de • www.kraiburg-elastik.de

August 2016

The tolerances also apply within the mat and when installed.