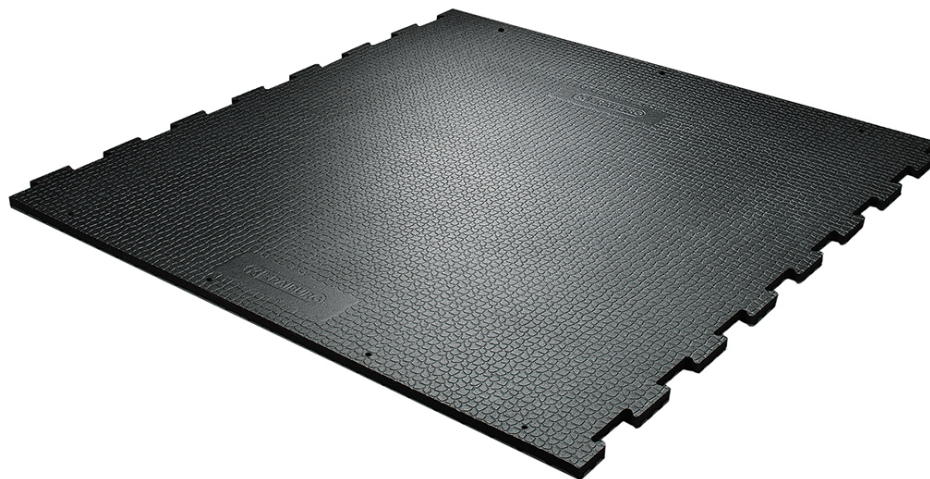


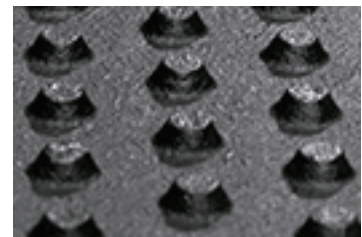
KURA P



Your KRAIBURG dealer:



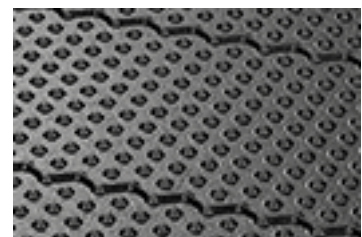
grip-surface: supports sure footing



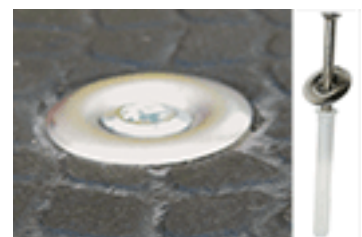
stud profile for ideal softness



reinforced puzzle-shaped edges



dirt barriers reduce soiling underneath the mats



KRAIBURG fastening system: extremely sturdy and rounded off

The benchmark for excellent walking comfort since more than 10 years

- special grip-surface for certified slip resistance
- ideal softness through stud profile at lower side
- improved walking comfort
 - » supports claw health and mobility
 - » promotes feed intake and high yield
- permanently stable in position and form
- puzzle compensates for natural thermal expansion and practically a seamless floor area
- the puzzle section parallel to the cleaning flaps is especially reinforced, so that the scraper can slide safely across it
- simple and fast installation of easy-to-handle single mats
- suitable for new construction, as well as renovation
- extremely sturdy fastening system
- manure removal with scraper and driving on mats possible*

>> especially for areas with high solar radiation:
KURA P SUN (with expansion slits in the mat)

Dimensions:

Fits very exactly - width can be adapted in 2 cm increments

thickness: 24 mm

width x length: in 2 cm increments from 96 cm to 500 cm (possibly several mat pieces are puzzled together) x 125 cm

Accessory:

pediKURA® » - soft flooring with abrasion zones

Scraper manure removal on rubber flooring has already been proven in practice:

In principal we recommend the use of **scrapers specifically developed for rubber floors.**

For structural alterations it is necessary to **adapt the scraper facilities** in coordination with the scraper manufacturer, according to the KRAIBURG guidelines for manure scrapers.*

Important: check the scraper at least once a year and deburr sharp edges!

Driving over:

KURA P can be driven on with standard equipment such as farm yard loader or

tractor with authorized pneumatic tyres at the **recommended inflation pressure up to max. 4 bar**. (Notice: drive with due care and steer in large radius!*)

Installation:

easy and fast installation with especially designed nail plugs - rounded off and flush countersunk (part of delivery)*

* Please take notice of the corresponding KRAIBURG specifications and installation instructions with useful advice and tips.

>The products presented here should only be used for the mentioned applications. Technical specifications are subject to alterations. All sales are subject to our General Terms and Conditions. Legal basis is the German version of the document.

Tolerances:

thickness:

+3/-2 mm

The tolerances also apply within the mat and when installed.

length + width:

+/- 1.5 % (DIN ISO 3302-1 tolerance class M4)