

PRÜFNUMMER  
2 0 1 5 0 1 0 0 6



## Noise reducing and durable

- improved wet slip resistance
- appealing mosaic design
- easy installation due to interlocking joints
- suitable for vehicle traffic\*

**Installation:** according to BELMONDO® installation instructions\*

**Surface:** mosaic design with wear optimised top coat

**Lower side:** grooves

**Material:** rubber

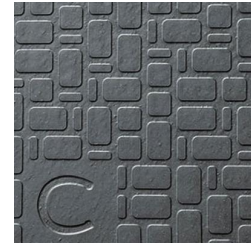
**Thickness:** 16 mm

**Dimensions:** 1 m x 1 m, 4 sides with puzzle shaped edges

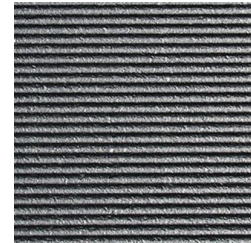
**Weight:** approx. 18 kg/m<sup>2</sup>

**Accessories:**

- BELMONDO® Drain gutter »
- BELMONDO® Gully »



mosaic design with top coat



stable groove profile on lower side

\* Please take notice of the corresponding specifications and installation instructions with useful advice and tips.

**thickness:**

+3/-2 mm

**length + width:**

+/- 1.5 % (DIN ISO 3302-1 tolerance class M4)

The tolerances also apply within the mat.

The products presented here generally should only be used for the listed applications. Technical specifications are subject to alterations. All sales are subject to our General Terms and Conditions. Legal basis is the German version of the document.