

2-layer comfortable large-area flooring system

- pleasantly soft lying area
- the specially designed lower rubber mat adapts to every load condition
 - good shock absorbance when standing up and lying down
- the seamless top covering is easy to clean
- dimensioning possible for almost every lying area
 - in areas larger than 5.25 x 6 m: joint covering with maxiPROFIL
- not suitable for vehicle traffic

Installation: according to BELMONDO® installation instructions*

Dimensions:

Complete system:

Thickness: approx. 40 mm

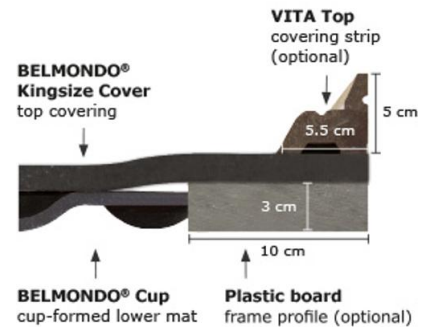
Width x Length: unlimited (from 525 x 600 cm: mat joint)

consists of:

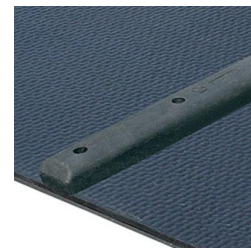
- **BELMONDO® Kingsize Cover**
 - **Thickness:** 15 mm
 - **Width x Length:** 262/348/440/525 cm x 250 cm - 600 cm in 10 cm increments
- **BELMONDO® Cup**
 - **Thickness:** 25 mm
 - **Width:** 120 cm
 - **Length:** 130 cm

Accessories:

- **VITA Top »**
 - **Height:** 5 cm
 - **Width:** 5.5 cm
 - **Length:** 200 cm
- **Plastic board**
 - **Height:** 3 cm
 - **Width:** 10 cm
 - **Length:** 200 cm
- **maxiPROFIL**
 - **Height:** 4.5 cm
 - **Width:** 13 cm
 - **Length:** 173 cm



proven pebbled profile on upper side



maxiPROFIL (optional) for covering mat joints

Ground prerequisites: concrete, minimum 10 cm thick and smooth

* Please take notice of the corresponding specifications and installation instructions with useful advice and tips.

thickness:

+3/-2 mm

length + width:

+/- 1.5 % (DIN ISO 3302-1 tolerance class M4)

The tolerances also apply within the mat.

The products presented here generally should only be used for the listed applications. Technical specifications are subject to alterations. All sales are subject to our General Terms and Conditions. Legal basis is the German version of the document.