

Tailor-made for every horsewalker

- improved wet slip resistance
- electrically conductive
- weatherproof and UV resistant
- frostproof # frozen matter can be loosened easier
- also suitable for water horsewalkers
- suitable for vehicle traffic*

Installation: according to BELMONDO® installation instructions*

Surface: rhombic profile with wear resistant top coat

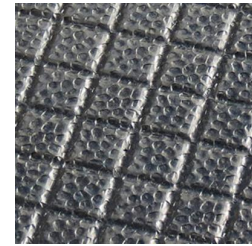
Lower side: multisquare profile (3 mm)

Material: rubber

Thickness: 21 mm

Dimensions: individually tailor-made

Weight: approx. 21 kg/m²



rhombic profile with top coat



multisquare profile on lower side

* Please take notice of the corresponding specifications and installation instructions with useful advice and tips.

thickness:

+3/-2 mm

The tolerances also apply within the mat.

length + width:

+/- 1.5 % (DIN ISO 3302-1 tolerance class M4)

The products presented here generally should only be used for the listed applications. Technical specifications are subject to alterations. All sales are subject to our General Terms and Conditions. Legal basis is the German version of the document.